



THE INJURY & ILLNESS PREVENTION PROGRAM

County of Riverside
Human Resources Department



RIVCO HR
safety division

INJURY AND ILLNESS PREVENTION PROGRAM
(Safety Program)

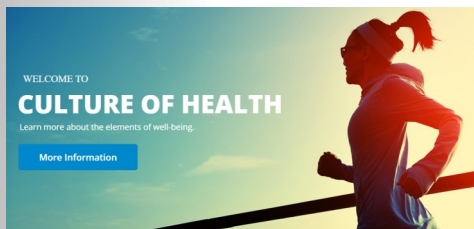
Created November 2003
Revised March 2020

The Injury and Illness Prevention Program (IIPP) is the written workplace safety program required in California for employers. Title 8 California Code of Regulations General Industry Safety Orders section 3203 requires every employer to develop and implement an effective IIPP. An effective IIPP improves the safety and health of employees in the workplace and reduces costs by fostering good management practices and employee involvement.

An effective IIPP makes good business sense as injuries and illness increase the cost of doing business. Direct costs of injury and illness to a business include medical treatment, higher worker's compensation insurance premiums, general liability insurance, and litigation. ***The Workers' Compensation Insurance Rating Bureau of California in a 2008 report cites that on average, total costs per injury can add up to more than \$50,000.00 for a back injury, \$62,000.00 for a slip and fall injury, and \$40,000.00 for a Carpal Tunnel or Repetitive Motion***

Injury¹. These costs do not include additional indirect or uninsurable costs such as lost productivity, re-training, hiring new employees, administrative time, repair and replacement of equipment, etc. which can cost 4 times the direct cost. In an ever increasingly competitive global economy, successful businesses must reduce and control their losses through an effective safety program or risk going out of business.

In Riverside County, the IIPP can be department or site specific depending upon the type of business operations and work locations. Administrative departments can have one written department IIPP which includes all of its locations because operations are similar. Information Technology, Department of Public Social Services and the Agricultural Commissioner's office have departmental plans. Other departments with locations that are not similar in operations may have site specific plans. Facilities Management and the Riverside University Health System have site specific plans that address differing operational hazards at work locations.



Health and Safety go hand in hand. Incorporating physical activity into your daily Safety duties will help to keep you fit and safe. For more information on healthy activities you can participate in at work, go to:



<https://cultureofhealth.rc-hr.com/>

Whether department or site specific, to comply with Title 8 CCR 3203 eight required elements must be included in an IIPP. These elements are:

- ◆ *Responsibility*
- ◆ *Compliance*
- ◆ *Communication*
- ◆ *Hazard Assessment*
- ◆ *Accident/Exposure Investigation*
- ◆ *Hazard Correction*
- ◆ *Training and Instruction*
- ◆ *Recordkeeping*

An organization must describe how it will satisfy each element procedurally to establish consistency and be effective in injury and illness prevention efforts.

To be effective at reducing worker injury and illness the IIPP must:

- Involve all employees, supervisors, and management. Involvement is possible through regular communications about safety issues in management and staff meetings, accident, injury and near-miss incident reporting, reporting of hazardous conditions or acts and accident investigation.
- Identify specific workplace and operational hazards employees are exposed to by conducting workplace safety inspections.
- Correct identified hazards in an appropriate and timely manner, and
- Provide effective training to all employees.



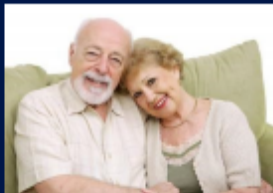
The IIPP is the framework through which worker safety, health and productivity can be achieved simultaneously. Safety is everyone's business in an organization.

In addition to the reduction of workplace injuries and illnesses and associated costs, organizations can be cited by Cal OSHA non-compliance. To ensure County department or site specific IIPP are effective and OSHA compliant, departments should review and update plans annually. Department are encouraged to contact their assigned Human Resources Safety Coordinator for review of their IIPP.

For more information and guidance about Injury and Illness Prevention programs visit the Cal/OSHA Consultation Services etool webpage at <https://www.dir.ca.gov/dosh/etools/09-031/index.htm> or the Cal/OSHA - Guide to Developing Your Workplace Injury and Illness Prevention Program with checklists for self-inspection at https://www.dir.ca.gov/dosh/dosh_publications/iipp.html

Also , visit the Riverside County Standard Safety Operations Manual Document 100, The Injury and Illness Prevention Program at <https://safety.rc-hr.com/SafetyCenter/SafetyManual.aspx>

Flu Vaccines Available at Riverside University Health System Community Health Centers



Flu Vaccine Appointments Encouraged

Walk-in hours

8:00 am - 11:00 am

1:00 pm - 4:00 pm



For More Information Call:

1-800-720-9553

www.rivco-familycarecenters.org



The Influenza vaccine is provided by the California Department of Public Health and Riverside University Health System -Public Health.

<p>Banning Family Care Center 3055 W. Ramsey St. Banning, CA 92220</p>	<p>Corona Community Health Center 2813 S. Main Street Corona , CA 92282</p>	<p>Hemet Family Care Center 880 N. State St. Hemet, CA 92543</p>
<p>Indio Family Care Center 47-923 Oasis St. Indio, CA 92201</p>	<p>Jurupa Valley Community Health Center 8876 Mission Blvd. Jurupa Valley, CA 92509</p>	<p>Lake Elsinore Family Care Center 2499 E. Lakeshore Dr. Lake Elsinore, CA 92530</p>
<p>Moreno Valley Community Health Center 23520 Cactus Ave. Moreno Valley, CA 92553</p>	<p>Palm Springs Family Care Center 1515 North Sunrise Way Palm Springs, CA 92262</p>	<p>Perris Family Care Center (Dr. Bruce Robert Reid Health Center) 308 E. San Jacinto Ave. Perris, CA 92570</p>
<p>Perris Valley Community Health Center 450 E. San Jacinto Ave. Perris, CA 92220</p>	<p>Riverside Neighborhood Health Center 7140 Indiana Ave. Riverside, CA 92504</p>	<p>Rubidoux Family Care Center (Don Schroeder Family Care Center) 5256 Mission Blvd. Riverside, CA 92509</p>

PARKING LOT HAZARDS

COUNTY OF RIVERSIDE HUMAN
RESOURCES SAFETY DIVISION

Safety Newsletter



Many employees begin and end their workday in parking lots, but they may overlook the potential dangers of the area. West Virginia University advises workers to approach parking lots the same way they would any street or intersection.

When walking in a parking lot, WVU recommends the following:

- *Watch for vehicles and check your surroundings.*
 - *Never assume a driver can or will see you.*
 - *Always look both ways before crossing and use sidewalks when available.*
- *Refrain from walking in between parked vehicles; instead, walk down the lot's main aisles.*
 - *Walk in groups so it's easier for drivers to see you. Wear appropriate shoes in inclement weather.*

When driving through a parking lot, the university says to:

- *Park in spots with less vehicle and foot traffic, and always watch for pedestrians.*
- *Avoid driving in reverse when possible. Instead, pull all the way through a parking spot to avoid backing out and dealing with blind spots.*
- *Drive slowly – no faster than 10 mph. Drive even slower in bad weather and remember that vehicles tend to skid in wet weather.*

**Be mindful
of tight
spaces
and low
clearance...**



Other Parking Lot Pitfalls

Inadequate pavement striping, potholes or cracks, lack of signage, debris, poor lighting, puddles, and snow and ice also can lead to pedestrian injuries. Slips, trips and falls are common in parking lots, and falls in general are the leading cause of death for older adults.

Choosing the right parking spot can go a long way toward deterring theft and crime. Consumer Reports provides some simple safety rules:



- *Pick spots that are well-lit and close to stores where you will be shopping*
- *Lock your doors*
- *Store purchases in places that are out of sight (in the trunk or tucked under dark-colored blankets)*

Large parking lots, such as those found at shopping malls, are considered most vulnerable to crime, according to the Urban Institute Justice Policy Center. One way for consumers to steer clear of trouble is to pick a lot where pedestrian traffic is restricted and video surveillance equipment is used to monitor the facility.

When in doubt....give us a shout! Call the Safety Division @ 951-955-3520

The Flu Fighters....

COUNTY OF RIVERSIDE HUMAN
RESOURCES SAFETY DIVISION

Safety Newsletter

TAKE 3 ACTIONS TO

FIGHT FLU

Influenza (flu) is a contagious disease that can be serious. Every year, millions of people get sick, hundreds of thousands are hospitalized, and thousands to tens of thousands of people die from flu. CDC urges you to take the following actions to protect yourself and others from flu.

GET YOURSELF AND YOUR FAMILY VACCINATED!

A yearly flu vaccine is the first and most important step in protecting against flu viruses.

Everyone 6 months or older should get an annual flu vaccine. Protect Yourself. Protect Your Family. Get Vaccinated. #FightFlu

STOP THE SPREAD

Take everyday preventive actions to help stop the spread of flu viruses!

Avoid close contact with sick people, avoid touching your eyes, nose, and mouth, cover your coughs and sneezes, wash your hands often (with soap and water).



ASK YOUR DOCTOR ABOUT FLU ANTIVIRALS

Take antiviral drugs if your doctor prescribes them!

Antiviral drugs can be used to treat flu illness and can make illness milder and shorten the time you are sick.



WWW.CDC.GOV/FLU

#FIGHT FLU





Studies indicate that in the United States, there are over 450,000 cardiac arrest related deaths—killing more people than car accidents, breast cancer, fire, and AIDS combined. Unlike heart attacks, sudden cardiac can affect people of all ages, sex, and health status. The use of an automated external defibrillator (AED), administered as soon as possible, is the only effective treatment for sudden cardiac arrest.

The American Heart Association strongly recommends employers, businesses, and corporations to implement life-saving AED programs to increase the chances of survival for their employees who have heart-related emergencies. With an AED program and proper training, employees can be better prepared to save the life of a

colleague, friend, or family member.

The County of Riverside Has an AED Program in Place

These are some of the reasons The County has invested in Automated External Defibrillators in the workplace:

- *AEDs in the Workplace Save Lives*
- *Defibrillation within 3 minutes of sudden cardiac arrest increases chances of survival by 70%.*
- *Defibrillation within 1 minute of collapse increases the chances of survival by 90%.*



The County's AED program is administered through the Human Resources Safety Division. There are currently 252 AED units in service in over 24 Departments and many of their divisions.

All County employees are encouraged to:

- *Volunteer for CPR/AED/ and First-Aid Certification training.*
- *Know where the AED is located at your facility*
- *Know who at your facility is already trained and certified in CPR/AED/ and First Aid treatment*
- *Know who is assigned as your facility Designated Safety Representative (DSR)*

CPR/AED/ and First Aid Certification training through the American Red Cross is provided by the County Safety Office. Locations where an AED is placed, per County AED Policy, must maintain at a minimum two staff members trained and certified in CPR/AED/ and First Aid. This certification is voluntary and requires approval by Department managers and supervisors. Although the County policy requires certified staff at each location an AED is placed, there is no regulatory requirement for AED certification. An Automated External Defibrillator (AED) is intended to be used to save lives by the general public. Everyone should be and is encouraged to be familiar with how an AED works. Philips Heart Start Monitors and other AED manufacturers provide videos on-line.

Any questions about the County's AED Program should be directed to your County Safety Representative or by calling the Safety office at (951) 955-3520.